

EELISA

European University

EELISA

EELISA CREDENTIAL SYSTEM

COMMUNITY CALL FOR JOINT ACTIVITIES

JUNE 2022

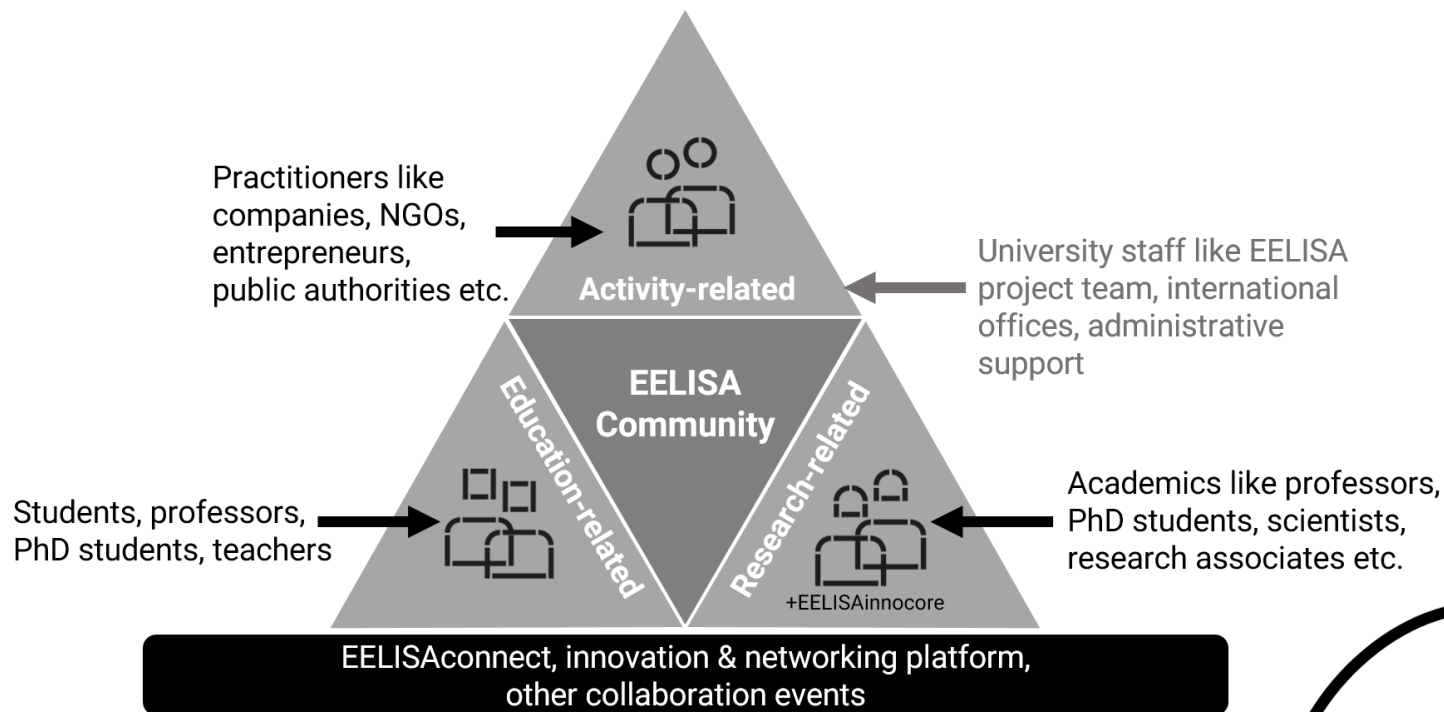


Co-funded by the
Erasmus+ Programme
of the European Union

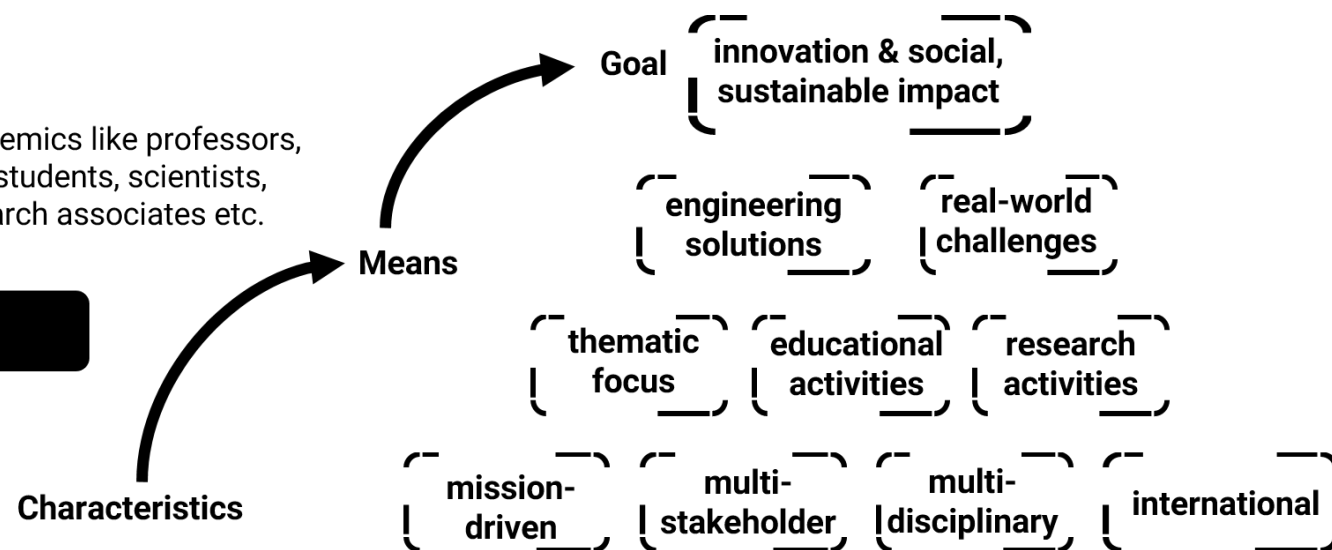
EUROPEAN CONTEXT



EELISA COMMUNITIES



EELISA Community Building Blocks



EELISA CREDENTIAL DEFINITION

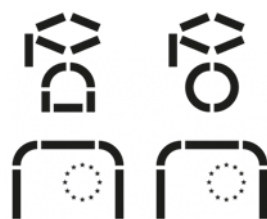
EELISA Communities produce activities that are innovative and transformative learning experiences for the participants, primarily the students. The EELISA Credential is the “academic materialization” of these experiences – it is a passport, certified, fraude-free and IT-based, in which the student collects the evidences (“badges”) of participation in the activities of the EELISA Communities.

- EELISA Credential is built on the whole of an educational pathway, in a progressive way
- EELISA Credential is built from the activities belonging to one or more Communities
- EELISA Credential is individual (whereas a Community has a collective scope).
- EELISA Credential is awarded to students and possible alumni, not faculties
- EELISA Credential materializes/recognizes ability to contribute to solving societal challenges addressed by Communities and as defined by the UN Sustainable Development Goals (SDGs)

The EELISA Credential is not a diploma/degree or an educational pathway in the sense that it does not address a profession or a disciplinary field.

It is an opportunity for students to educate themselves by “rubbing shoulders” with the world outside the university, by “grasping” societal challenges.

EELISA RECOGNITION SYSTEM



EELISA Recognition System



EELISA Credential

A modern system of achievement recognition that will acknowledge the engagement of a student within a EELISA community as well as his/her contribution to the process of solving social challenges.

EELISA Diploma Supplement

It will contribute to developing the European commitment of the students through mobility abroad, courses recognized by the EELISA alliance and involvement in EELISA communities.


EELISA Degree

Multisite degrees based on a common internal quality assurance mechanism for managing EELISA activities that will set the mark for demonstrating what a European engineer is.

CREDENTIAL GUIDELINES

Each activity, according to its nature, its ambition, its theme can allow each participant to validate one or more badges. It is up to the activity designer to select which badge(s) a participant is eligible for. The activity designer proposes the badge(s) to be awarded to the community coordinator/leader, as well as the proposed assessment method.

- An activity delivered in a single institution of the alliance for its students only can give rise to the delivery of badge(s) for the EELISA Credential as long as this activity is part of a community and that it has been validated by the community coordinator.
- Another criterion is the international aspect, an activity that gives rise to one or more badges must prove its international character (teaching staff, student participation, subject...).
- Finally, an activity that gives rise to the issuance of badge(s) must be outward-looking/practical (thus differentiating itself from a regular course), this may be through its subject, the participation of stakeholders.

EELISA Credential levels of impact	
- Level 1 = discovery (simple participation in a conference as a listener)	
- Level 2 = knowledge (5 cognitive educational outcomes)	
- Level 3 = commitment (5 socio-emotional educational outcomes)	
- Level 4 = action (5 behavioural educational outcomes)	
- Level 5 = transformation	








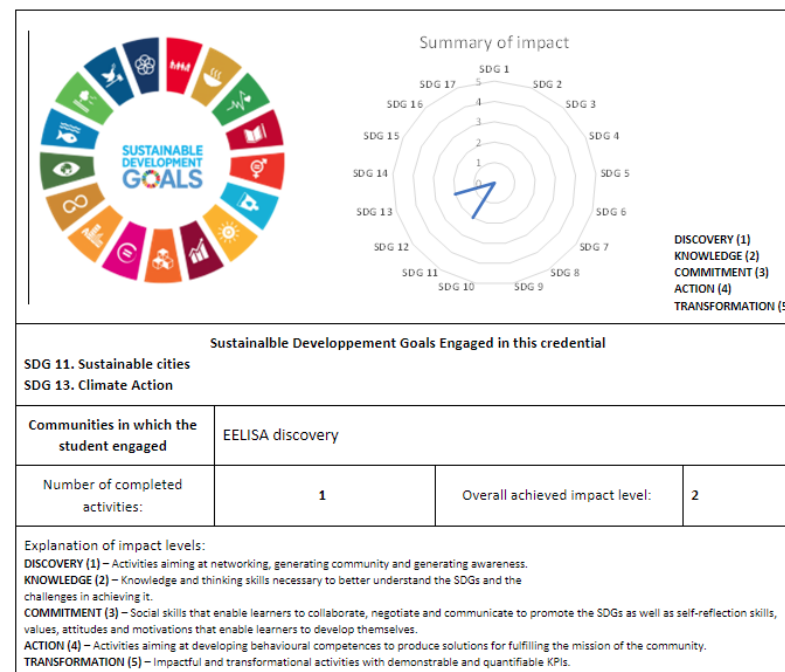
CREDENTIAL / BADGES

CREDENTIAL = Collection of BADGES that correspond to a sustainable development goal and an impact level

BADGE: given at the end of each activity

CREDENTIAL: given at the same time as the home university degree

Community	DISCOVERY – Designing a Sustainable and deCarbOnized uNIVERSITY			
Activity name:	Introduction to Campus Sustainability			
Description:	Set of seminars to introduce students to the actions that will contribute to the transformation of university campuses from the perspective of sustainability with different transversal axes focused on energy, water, buildings, urban green infrastructure, mobility, monitoring, and change of habits. The aim is to make students aware of the problems we are currently facing in the field of sustainability, decarbonization, ecological transition, energy efficiency, among other things... and to present the university campus as an environment in which to apply certain multidisciplinary and collaborative actions between students, teachers and administrative and service staff.			
Host Institution:	Universidad Politécnica de Madrid			
Dates:	From: 3 rd Nov 2021		To: 15 th Dec 2021	
ECTS equivalent:	1	<input type="checkbox"/> Individual	Type of activity	International seminar
		<input checked="" type="checkbox"/> In group		
SDG and Learning objectives			Impact level	Badges
SDG 11. Sustainable cities	The learner is able to evaluate and compare the sustainability of their and other settlements' systems in meeting their needs particularly in the areas of food, energy, transport, water, safety, waste treatment, inclusion and accessibility, education, integration of green spaces and disaster risk reduction.		2	
SDG 13. Climate Action	The learner knows which human activities – on a global, national, local and individual level – contribute most to climate change.		2	



GLOSSARY

- Activity:** Educational experience proposed by a community for students
- Activity designer:** An individual or group that designs and delivers an activity. Most often it is an academic staff.
- Badge:** Unit of learning acquisition and impact comprising the EELISA Credential. Each badge corresponds to one sustainable development goal and one impact level.
- Community coordinator:** Individual or group of individuals who manage the animation and production of activities of an EELISA community.
- EELISA Community:** A group of individuals (teachers, researchers, students, university staff, representatives of external stakeholders) gathered around a societal challenge. A community produces, among other things, educational activities for students.
- EELISA Credential:** A collection of badges that represent the acquisition of skills and knowledge related to sustainable development goals and the recipient's ability to make an impact on societal challenges.
- EELISA QA:** Quality assurance system of the EELISA alliance
- Impact level:** Badge measurement scale. There are 5 levels of impact (discovery, knowledge, engagement, action, transformation) that correspond to learning objectives.
- Learning objective:** what a student/learner is able to know or implement at the end of an activity.
- SDG:** sustainable development goal

BADGES

EELISA badge level	Key words for educational outcomes	Example of an associated learning experience	Examples of possible assessment methods	Collective Component required
Discovery	Exposure, superficial and beginners' knowledge	Conference / Roundtable	Attend a conference	none
Knowledge	Understand, Evaluate, Know	Cycle of conferences / MOOC	MCQ, Essay, Reflective practice	low
Commitment	Connect with, Reflect, Contextualize, Feel responsible	Lectures with applied tutorials	MCQ, Reflective practice, Problem solving, Essay	moderate
Action	Plan, Implement, Influence, Speak, Organize, Promote, Create	Group work with production of deliverables	MCQ, Essay, Problem solving, Practical work	strong
Transformation	Implement, Probe, Deployment, Build	impactful project with demonstrable KPIs (funds raised, populations reached, stakeholder engagement...)	Objective and measurable demonstration of impact	very strong

Exemplary Badges



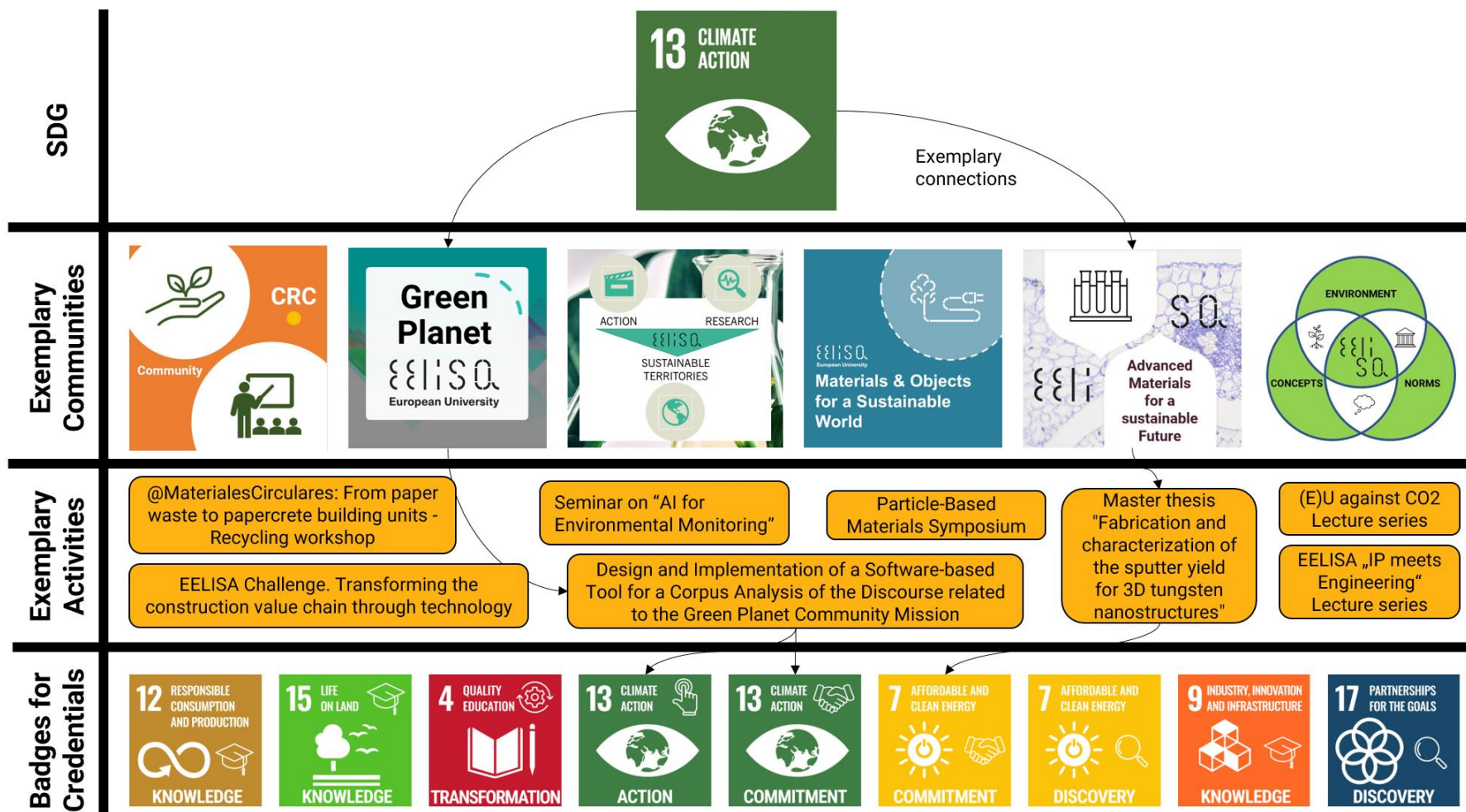
BADGES

IMPACT
COLLECTIVE SCOPE



EELISA Credential Outcomes	Exemplary Learning objectives
Discovery	The learner discovers the distribution between poor and rich populations in the world and evolves on its representation.
Knowledge	The learner understands how extremes of poverty and extremes of wealth affect basic human rights and needs.
Commitment	The learner is able to identify their personal experiences and biases with respect to poverty.
Action	The learner is able to plan, implement, evaluate and replicate activities that contribute to poverty reduction.
Transformation	The learner settles, within a group, levers to transform the practices of a target population.

IN PRACTICE





CREDENTIAL QA SYSTEM – reference documents



- [EELISA Credential requirements](#)
- [EELISA Credential quality assurance system document](#)
- [EELISA Credential badge tool for activity designers](#)



GO FURTHER

- EELISA Communities
<https://community.eelisa.eu/>
- Micro-credentials
<https://op.europa.eu/en/publication-detail/-/publication/7a939850-6c18-11eb-aeb5-01aa75ed71a1>
- Education for Sustainable Development Goals: learning objectives
<https://unesdoc.unesco.org/ark:/48223/pf0000247444>



thank

you

Learn more: www.eelisa.eu



EELISA has received funding from the European Union's Erasmus+ programme under GA No. 101004081 /
EELISA-InnoCORE has received funding from the European Union's Horizon 2020 R & I programme under
GA No. 101035811